

**MINUTES
RIALTO UNIFIED SCHOOL DISTRICT
DR. JOHN R. KAZALUNAS EDUCATION CENTER
182 EAST WALNUT AVENUE, RIALTO, CA 92376**

October 24, 2018

A. OPENING

CALL TO ORDER AND ROLL CALL

The regular meeting of the Board of Education of the Rialto Unified School District was called to order at 6:00 p.m. by President Martinez at the Dr. John R. Kazalunas Education Center, 182 East Walnut Avenue, Rialto, CA 92376.

Members present: Joseph W. Martinez, President; Edgar Montes, Vice President; Nancy G. O'Kelley, Clerk; and Joseph Ayala, Member. Dina Walker, Member, arrived at 6:23 p.m.

Administrators present: Cuauhtémoc Avila, Ed.D., Superintendent; Darren McDuffie, Ed.D., Lead Strategic Agent: Strategics, Congruence and Social Justice; Mohammad Z. Islam, Associate Superintendent, Business Services; Kelly Bruce, Lead Innovation Agent, Education Services; and Rhonda Kramer, Lead Personnel Agent, Personnel Services. Also present was Rosie Williams, Executive Secretary.

OPEN SESSION

1. Comments on Closed Session Agenda Items. Any person wishing to speak on any item on the closed session agenda will be granted three minutes.

There were no comments.

CLOSED SESSION

Upon a motion by Vice President Montes, seconded by Clerk O'Kelley, and approved by a 4-0 vote, the Board of Education entered into closed session at 6:01 p.m. to consider and discuss the following items:

1. Public Employee Employment/Discipline/Dismissal/Release/Reassignment of Employees (Government Code section 54957)

Administrative Appointment:

- Energy Manager

(Ref. E 1.1)

2. Student Expulsions/Reinstatements/Expulsion Enrollments
3. **CONFERENCE WITH LABOR NEGOTIATORS**
Agency designated representatives: Cuauhtémoc Avila, Ed.D., Superintendent; Rhea McIver Gibbs, Lead Personnel Agent, Personnel Services; and Rhonda Kramer, Lead Personnel Agent, Personnel Services.
Employee organizations: California School Employees Association, Chapter 203 (CSEA), Rialto Education Association (REA), Communications Workers of America (CWA)
4. Review Liability Claim Numbers 17-18-08 and 18-19-03.

ADJOURNMENT OF CLOSED SESSION

Upon a motion by Member Walker, seconded by Clerk O'Kelley, and passed by a unanimous 5-0 vote, closed session adjourned at 7:02 p.m.

OPEN SESSION RECONVENED – 7:02 P.M.

Members present: Joseph W. Martinez, President; Edgar Montes, Vice President; Nancy G. O'Kelley, Clerk; Joseph Ayala, Member; and Dina Walker, Member.

Administrators present: Cuauhtémoc Avila, Ed.D., Superintendent; Darren McDuffie, Ed.D., Lead Strategic Agent: Strategics, Congruence and Social Justice; Mohammad Z. Islam, Associate Superintendent, Business Services; Kelly Bruce, Lead Innovation Agent, Education Services; and Rhonda Kramer, Lead Personnel Agent, Personnel Services. Also present was Rosie Williams, Executive Secretary, and Jose M. Reyes, Interpreter.

PLEDGE OF ALLEGIANCE

Anthony Garcia, 5th grade Morgan Elementary School student, led the Pledge of Allegiance.

PRESENTATION BY MORGAN ELEMENTARY SCHOOL

Morgan Elementary School students Anthony Garcia, Noah Pinedo, Moses Hernandez, and Christopher Garcia, treated the audience to a Drumline performance, led by Ms. Cecilia Pinedo, Morgan Elementary School Technology Instructional Assistant and Morgan's Drumline Coach/Mentor.

REPORT OUT OF CLOSED SESSION

Superintendent Avila reported that in closed session the Board of Education took the following action:

- Accepted the administrative appointment of Javier Castrejon, Energy Manager, Maintenance and Operations, by a unanimous 5-0 vote by the Board of Education.
- Accepted the request for a leave of absence for classified employee #1773338, October 24, 2018 through December 14, 2018, by a unanimous 5-0 vote by the Board of Education.
- Denied the request for a leave of absence for classified employee #1900338, October 23, 2018 through December 21, 2018, by a 3-2 vote by the Board of Education.

The vote was as follows:

President Martinez – Aye

Vice President Montes – Abstain

Clerk O'Kelley – Aye

Member Ayala – Aye

Member Walker - Abstain

President Martinez announced that they will be returning to closed session after open session.

ADOPTION OF AGENDA

Prior to the adoption of the agenda, President Martinez stated that the following items will be modified as follows:

- On Section J. PERSONNEL SERVICES CONSENT ITEMS, page Ref. J 3.1 under RETIREMENTS, Gretchen Millhollon retirement date was changed from 10/26/2018 to 10/25/2018.
- On page Section K. DISCUSSION/ACTION ITEMS Ref. K 8 was changed from President Joseph W. Martinez to Vice President Edgar Montes.

Upon a motion by Member Walker, seconded by Clerk O'Kelley, the Agenda was adopted, as amended, by Student Board Member Hernandez's preferential vote and a unanimous 5-0 vote by the Board of Education.

B. PRESENTATIONS

1. High School – District Student Advisory Committee (DSAC)

The following DSAC students shared information and activities held at their schools:

Alan Palma - Rialto High School
Perry Lightner - Milor High School
Nyela Robertson – Carter High School
Cesar Ramos – Eisenhower High School

2. Student Population Projections by Residence School Years 2017-2024 presentation by Davis Demographics

Esau Joya, Project Manager with Davis Demographics, conducted a PowerPoint presentation showing their findings of the residence seven year student projections from the fall 2017 student counts. The PowerPoint is attached – see pages Ref. E 1.12 to E 1.21.

3. Parent Institute Planning Committee Recognition by Carol Mehochko, Agent: Special Programs

The following individuals who worked diligently to make the 10th Annual Parent Summit a success were honored with a Certificate of Recognition plaque:

Areta August	Elizabeth Moreno
Yolanda Beas	Luvia Nava
Eduwigis Castanon	Mirna Ruiz
Rafael Chavarria	Maria Sandoval
Carla Escobar	Gabriela Solis
Rosa Fuentes	Sylvia Vargas
Gina Haymond	Patricia Vidrio

4. Career Technical Education (CTE) Presentation by Dr. Edward D'Souza, Lead Academic Agent, Math/Science and College/Career Pathways, and Juanita Chan, Coordinator, STEM & Related College/Career Pathways

Dr. Edward D'Souza, Lead Academic Agent, Math/Science and College/Career Pathways, and Juanita Chan, Coordinator, STEM & Related College/Career Pathways, conducted a PowerPoint presentation providing an update on the CTE program. The PowerPoint is attached – see pages Ref. E 1.22 to E 1.36.

C. COMMENTS

1. Public Comments from the Floor: At this time, any person wishing to speak on any item not on the Agenda will be granted three minutes.

Russel Silva, Rialto resident, shared that at the top of the 8th inning the score is 4-2 Boston.

Mirna Ruiz, parent, thanked Kelly Bruce, Carol Mehochko, and Gordon Leary for attending their PTA meeting. She stated that she appreciates the team work and partnership with the District. She shared that Safety and Security will be present at all of their future meetings. She thanked the Board for the Parent Summit recognition. She also stated, in reference to the CTE presentation, not to forget to include the Special Education students.

2. Public Comments on Agenda Items: Any person wishing to speak on any item on the Agenda will be granted three minutes.

There were no comments.

3. Comments from Association Executive Board Members: Rialto Education Association (REA), California School Employees Association (CSEA), Communications Workers of America (CWA), Rialto School Managers Association (RSMA)

Lisa Lindberg, REA President, stated that Werner Elementary School REA Reps expressed their concern regarding losing their Principal and getting a replacement as soon as possible. She urged the Board to vote yes on the SERP item on the Agenda, and she thanked Mohammad Z. Islam for putting the SERP together.

Raquel Torres, CSEA President, provided the Board with information regarding Assembly Bill 1808. On September 28, 2018, a tentative agreement was signed with the District. The tentative agreement and the three MOU's all passed. She reported that CSEA members are looking forward to the classification and compensation study. She expressed that she is very sad that one of the MOU's for a new job description was not passed by the members. She is also looking forward for the SERP for classified members.

Heather Estruch, CWA Representative, stated that she likes the picture of the shake out on the back of the Agenda. She also wished everyone a great rest of the month.

4. Comments from the Superintendent
5. Comments from Members of the Board of Education

D. PUBLIC HEARING

PUBLIC INFORMATION

1. Williams Settlement Legislation Quarterly Uniform Complaint Report Summary covering July – September 2018.

CONSENT CALENDAR ITEMS

Upon a motion by Member Walker, seconded by Clerk O'Kelley, Items E – J were approved, as amended, by Student Board Member Hernandez's preferential vote and a unanimous 5-0 vote by the Board of Education.

E. MINUTES

1. Approve the minutes of the Regular Board of Education meeting held October 10, 2018.

F. GENERAL FUNCTIONS CONSENT ITEMS - None

1. Second reading of revised Board Policy 0420(a-e); Philosophy, Goals, Objectives and Comprehensive Plans: School Plans/Site Councils.
2. Second reading of revised Board Policy 1114(a-d); Community Relations: District-Sponsored Social Media.
3. Second reading of revised Board Policy 3100(a-h); Business and Noninstructional Operations: Budget.
4. First reading of revised Board Policy 1230(a-d); Community Relations: School-Connected Organizations.
5. First reading of **NEW** Board Policy 3515.7(a-b); Business and Noninstructional Operations: Firearms on School Grounds.
6. First reading of **NEW** Board Policy 3515.21(a-c); Business and Noninstructional Operations: Unmanned Aircraft Systems (Drones).

G. INSTRUCTION CONSENT ITEMS

1. Approve the purchase of admission tickets (\$577.50) and transportation cost (\$1,012.10) for 55 parents of the Family Leadership Institute to visit the Museum of Tolerance on November 8, 2018, at a cost of \$1,589.60, to be paid from Title I, Part A funds.
2. Approve ten (10) cadets (2 girls and 8 boys) of Eisenhower High School's MJROTC and two (2) chaperones (1 female and 1 male) to visit Washington, D.C., on November 12, 2018 through November 15, 2018.
3. Approve to reimburse expenses for mileage, meals, and hotel for two (2) Model Continuation High School (MCHS) visiting committee members who will conduct the verification visit process at Milor Continuation High School on November 5, 2018 through November 7, 2018, at a cost of \$1,500.00, to be paid from the General Fund.

H. BUSINESS AND FINANCIAL CONSENT ITEMS

1. Approve Warrant Listing Register and Purchase Order Listing for all funds from September 22, 2018 through October 8, 2018, (sent under separate cover to Board Members). A copy for public review will be available at the Board Meeting.
2. Accept the listed donations from The Way Bible Fellowship and Lifetouch National School Studios, and request that a letter of appreciation be sent to the donors.
3. Accept the second allocation for the Fresh Fruit and Vegetable Program Grant from the United States Department of Agriculture (USDA) for the following Schools: Bemis, Boyd, Casey, Curtis, Dunn, Henry, Kelley, Morgan, Morris, Morgan, Preston and Werner Elementary Schools in the amount of \$339,812.15.
4. Approve an agreement with Cherie Francis, Licensed Occupational Therapist to provide Independent Education Evaluations (IEEs) effective October 25, 2018 through June 30, 2019, at a cost of \$2,500.00, to be paid from the Special Education fund.
5. Approve an agreement with Pathfinder Ranch Science and Outdoor Education School to provide Science Camp for Fitzgerald Elementary School's 5th grade students from February 4, 2019 through February 6, 2019, at a cost of \$11,160.00, to be paid from Fitzgerald PTA funds.

6. Approve Amendment No. 2 to the agreement with Knowland Construction Services for an increase of \$16,288.00 to the original contract amount of \$134,400.00 for a combined total not-to-exceed \$150,688.00 for extended inspection services at twelve (12) school sites during the construction of Phases 4, 5, and 6 of the Solar Energy Project, at a cost of \$16,288.00, to be paid from the General Fund – to be reimbursed by Onyx Renewable Partners L.P. at the end of the project.

I. FACILITIES PLANNING CONSENT ITEM - None

J. PERSONNEL SERVICES CONSENT ITEMS

- 1-3. Approve Personnel Report No. 1203 for classified and certificated employees.
4. Adopt Resolution No. 18-19-15 authorizing the Lead Personnel Agent, Personnel Services, to assign various teachers at the secondary level, with their consent, to teach any subject in departmentalized classes below grade 9 if the teacher has completed 12 semester units, or 6 upper division or graduate semester units, in the subject to be taught.

K. DISCUSSION/ACTION ITEMS

Upon a motion by Member Walker, seconded by Clerk O'Kelley, Item K1 was approved by a unanimous 5-0 vote by the Board of Education.

1. Approve the change of date of the Board of Education meeting from Wednesday, December 5, 2018, to Friday, December 7, 2018, in order to be in compliance with Education Code Sections 5017, 35143 and 72000(c)(2)(A).

Upon a motion by Vice President Montes, seconded by Clerk O'Kelley, Item K2 was approved by a unanimous 5-0 vote by the Board of Education.

2. Adopt Resolution No. 18-19-16 declaring the week of October 23-31, 2018, as National Red Ribbon Week and encourage all teachers, support staff, and students to participate in alcohol and drug prevention education programs and activities.

Upon a motion by Vice President Montes, seconded by Clerk O'Kelley, Item K3 was approved by a unanimous 5-0 vote by the Board of Education.

3. Adopt Resolution No. 18-19-17 establishing a Supplemental Early Retirement Plan (SERP) for Certificated (Management or Non-Management), Classified (Management or Non-Management),

Supervisory and Confidential employees of the Rialto Unified School District effective July 1, 2019.

Upon a motion by Member Walker, seconded by Clerk O'Kelley, Item K4 was approved by a unanimous 5-0 vote by the Board of Education.

4. Approve an agreement with Keenan & Associates as the consultant to assist with the design, implementation and administration of a Supplemental Early Retirement Plan (SERP), effective October 25, 2018 through the duration of all benefits paid under the Plan over a period of five (5) years, at a 3.75% fee based on annual premiums, to be paid from the General Fund.

At 8:54 p.m., Vice President Montes motioned to return to closed session, it was seconded by Clerk O'Kelley, and approved by a unanimous 5-0 vote by the Board of Education.

ADJOURNMENT OF CLOSED SESSION

Upon a motion by Clerk O'Kelley, seconded by Vice President Montes, and passed by a unanimous 5-0 vote, closed session adjourned at 9:14 p.m.

OPEN SESSION RECONVENED – 9:14 P.M.

Upon a motion by Clerk O'Kelley, seconded by Member Walker, Item K5 was approved by a unanimous 5-0 vote by the Board of Education.

5. Deny Liability Claim No. 17-18-08.

Upon a motion by Member Walker, seconded by Clerk O'Kelley, Item K6 was approved by a unanimous 5-0 vote by the Board of Education.

6. Deny Liability Claim No. 18-19-03.

Board Members discussed the results of the Board Self-Evaluation Report. (The report will be posted on the District website.)

Upon a motion by Vice President Montes, seconded by Clerk O'Kelley, Item K7 was approved by a unanimous 5-0 vote by the Board of Education.

7. Board Self-Evaluation Session: A discussion of results from the Board of Education's Self-Evaluation Report.

Upon a motion by Member Walker, seconded by Clerk O'Kelley, Item K8 was approved by a 4-1 vote by the Board of Education.

The vote was as follows:

President Martinez – Aye

Vice President Montes – Abstain

Clerk O'Kelley – Aye

Member Ayala – Aye

Member Walker - Aye

This item was amended as indicated.

8. Appoint ~~President Joseph W. Martinez~~ ***Vice President Montes*** as the Voting Representative to the County Committee as successor for Member Dina Walker, who was elected as the Voting Representative at the December 6, 2017, Board of Education meeting, and is unable to serve.

Upon a motion by Clerk O'Kelley, seconded by Vice President Montes, Item K9 was approved by a unanimous 5-0 vote by the Board of Education.

9. Approve the recommendations of the Administrative Hearing Panel (AHP):

STIPULATED EXPULSIONS

Case Numbers:

18-19-10

18-19-9

18-19-7

18-19-5

President Martinez announced the following:

The next regular meeting of the Board of Education of the Rialto Unified School District will be held on Wednesday, November 14, 2018, at 7:00 p.m., at the Dr. John R. Kazalunas Education Center, 182 East Walnut Avenue, Rialto, California.

Materials distributed or presented to the Board of Education at the Board Meeting are available upon request from the Superintendent's Office.

L. ADJOURNMENT

Upon a motion by Vice President Montes, seconded by Clerk O'Kelley, and approved by a unanimous 5-0 vote by the Board of Education, the meeting was adjourned at 9:44 p.m.


Clerk, Board of Education


Secretary, Board of Education



Rialto Unified School District

Student Population Projections by Residence

School Years 2017-2024

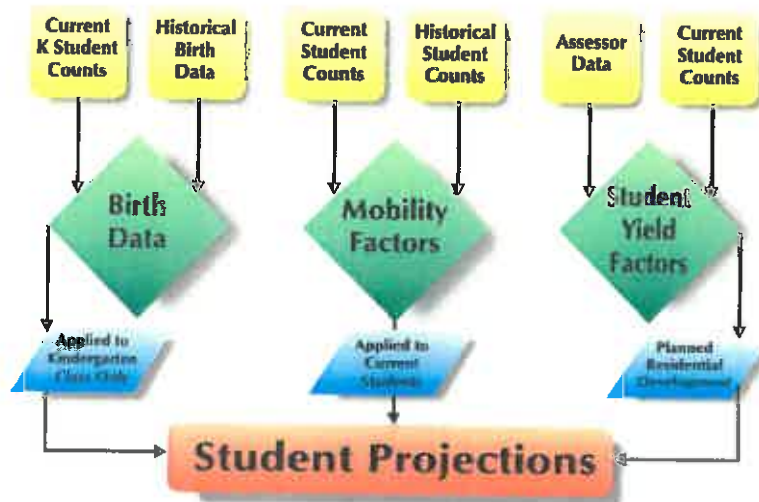
Presented by 
October 24, 2018

Work Accomplished by DDP for Rialto USD

- Set-up GIS Data Layers (including mapping 4 years of student data)
- Acquired latest parcel & street data from the County GIS Department
- Researched current and future new housing
- Meetings and conference calls with Planning & District
- Incorporated new residential development in projections
- Calculated specific factors for Rialto USD area (birth data & mobility)
- Updated 7-year student forecast based on current attendance areas boundaries
- Provided a Demographic Study with findings and analysis



DDP 7-Year Projection Methodology



Rialto Birth Data – By Zip Code

Year	92376			Used in Projection	Year of Projection
	2000	2001	Change		
2000	1,489	1,503	108.6%		
2001	1,503	1,528	110.7%		
2002	1,528	1,582	114.6%		
2003	1,582	1,631	118.2%		
2004	1,631	1,692	122.6%		
2005	1,692	1,691	122.5%		
2006	1,691	1,697	123.0%		
2007	1,697	1,630	119.1%		
2008	1,630	1,464	106.1%		
2009	1,464	1,402	101.6%		
2010	1,402	1,425	103.3%		
2011	1,425	1,380	BASE		
2012	1,380	1,350	87.8%	97.8%	2018/19
2013	1,350	1,375	89.6%	99.6%	2019/20
2014	1,375	1,451	105.1%	105.1%	2020/21
2015	1,451	1,380	86.6%	96.6%	2021/22
2016	1,380			100.3%	2022/23
				100.9%	2023/24
				101.2%	2024/25

Year	92377			Used in Projection	Year of Projection
	2000	2001	Change		
2000	304	282	104.4%		
2001	282	257	102.4%		
2002	257	265	105.6%		
2003	265	273	108.8%		
2004	273	281	112.0%		
2005	281	287	114.3%		
2006	287	306	121.9%		
2007	306	254	101.2%		
2008	254	277	110.4%		
2009	277	214	85.5%		
2010	214	245	97.8%		
2011	245	251	BASE		
2012	251	256	102.0%	102.0%	2018/19
2013	256	261	104.6%	104.6%	2019/20
2014	261	275	106.6%	106.6%	2020/21
2015	275	243	86.6%	86.6%	2021/22
2016	243			103.1%	2022/23
				103.4%	2023/24
				103.2%	2024/25

Page 8 of the Report

(Ref. E 1.14)

DDP Projected Units for the Next 7 years for Rialto USD (2018-2024)

- 1,317 Single Family Detached (SFD) units
 - 270 Multi-Family Attached (MFA) units
 - 59 Apartment (APT) rental units
-
- 1,646 TOTAL UNITS BUILT

Arrived at above figure by accomplishing the following:

- site visits for all active projects throughout the District
- speaking with sales reps
- Discussions with City planners, the County and District Staff
- Online research (City GIS, project/developer websites, Google Earth, etc.)



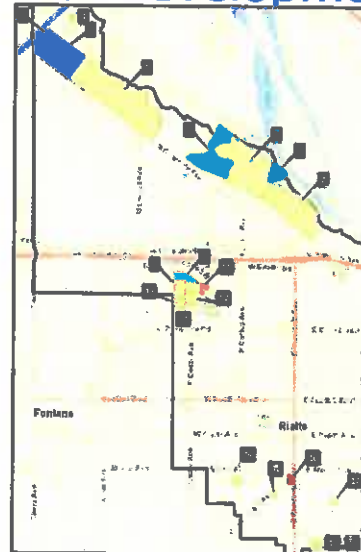
6

Planned Residential Development

1. Renaissance Place	Leonor	40	Single family detached
2. Lytle Creek Ranch - HB	Lytle DC	628	Apartment
3. Lytle Creek Ranch - HB	Lytle DC	859	Multi-family attached
4. Lytle Creek Ranch - HB	Lytle DC	1745	Single family detached
5. Lytle Creek Ranch - HB	Lytle DC	1428	Multi-family attached
6. Lytle Creek Ranch - HB	Lytle DC	817	Single family detached
7. Lytle Creek Ranch - HB	Lytle DC	672	Single family detached
8. Renaissance - Tract 110	Levin Investment Corp.	312	Multi-family attached
9. Renaissance - Tract 113	Levin Investment Corp.	140	Single family detached
10. Renaissance - Tract 114	Levin Investment Corp.	174	Single family detached
11. Renaissance - Tract 115	Levin Investment Corp.	308	Apartment
12. Renaissance - Tract 116	Levin Investment Corp.	171	Single family detached
13. Renaissance - Tract 118	Levin Investment Corp.	189	Single family detached
14. Adams Drive	Crest Wood Communities	75	Single family detached
15. Serrano Village	RC Hobbs Communities	33	Single family detached
16. Santa Barbara Apts	BNI Communities	104	Apartment
17. Renaissance	RC Hobbs Communities	86	Single family detached
18. Wildrose	Franklin Communities	118	Single family detached
19. Wildrose	Franklin Communities	77	Single family detached

Note: Unit totals listed in tables above represent total amount of units beyond projection time frame.
Lytle Creek Ranch and Renaissance unit totals/types are based on the total amount of units listed in their specific plans. Total units within the projected time frame were given by the truster developers.

Page 18 of the Report



District Boundary
 ■ Apartment
 ■ Multi-family attached
 ■ Single family detached

About 1,646 homes are expected to be built and occupied over the next seven years.



7

(Ref. E 1.15)

Planned Residential Development Over the next 7 years

Total Annual Residential Units Over Next 7 Years
Total SFDs: 1,347 Total MFAs: 270 Total APTs: 89

City	10/17/17 - 10/17/18	10/18/18 - 10/18/19	10/19/19 - 10/19/20	10/20/20 - 10/20/21	10/21/21 - 10/21/22	10/22/22 - 10/22/23	10/23/23 - 10/23/24	10/24/24 - 10/24/25	10/25/25 - 10/25/26	10/26/26 - 10/26/27	10/27/27 - 10/27/28	10/28/28 - 10/28/29	10/29/29 - 10/29/30	10/30/30 - 10/30/31	10/31/31 - 10/31/32	10/32/32 - 10/32/33	10/33/33 - 10/33/34	10/34/34 - 10/34/35	10/35/35 - 10/35/36	10/36/36 - 10/36/37	10/37/37 - 10/37/38	10/38/38 - 10/38/39	10/39/39 - 10/39/40	10/40/40 - 10/40/41	10/41/41 - 10/41/42	10/42/42 - 10/42/43	10/43/43 - 10/43/44	10/44/44 - 10/44/45	10/45/45 - 10/45/46	10/46/46 - 10/46/47	10/47/47 - 10/47/48	10/48/48 - 10/48/49	10/49/49 - 10/49/50	10/50/50 - 10/50/51	10/51/51 - 10/51/52	10/52/52 - 10/52/53	10/53/53 - 10/53/54	10/54/54 - 10/54/55	10/55/55 - 10/55/56	10/56/56 - 10/56/57	10/57/57 - 10/57/58	10/58/58 - 10/58/59	10/59/59 - 10/59/60	10/60/60 - 10/60/61	10/61/61 - 10/61/62	10/62/62 - 10/62/63	10/63/63 - 10/63/64	10/64/64 - 10/64/65	10/65/65 - 10/65/66	10/66/66 - 10/66/67	10/67/67 - 10/67/68	10/68/68 - 10/68/69	10/69/69 - 10/69/70	10/70/70 - 10/70/71	10/71/71 - 10/71/72	10/72/72 - 10/72/73	10/73/73 - 10/73/74	10/74/74 - 10/74/75	10/75/75 - 10/75/76	10/76/76 - 10/76/77	10/77/77 - 10/77/78	10/78/78 - 10/78/79	10/79/79 - 10/79/80	10/80/80 - 10/80/81	10/81/81 - 10/81/82	10/82/82 - 10/82/83	10/83/83 - 10/83/84	10/84/84 - 10/84/85	10/85/85 - 10/85/86	10/86/86 - 10/86/87	10/87/87 - 10/87/88	10/88/88 - 10/88/89	10/89/89 - 10/89/90	10/90/90 - 10/90/91	10/91/91 - 10/91/92	10/92/92 - 10/92/93	10/93/93 - 10/93/94	10/94/94 - 10/94/95	10/95/95 - 10/95/96	10/96/96 - 10/96/97	10/97/97 - 10/97/98	10/98/98 - 10/98/99	10/99/99 - 10/99/100	11/00/100 - 11/00/101	11/01/101 - 11/01/102	11/02/102 - 11/02/103	11/03/103 - 11/03/104	11/04/104 - 11/04/105	11/05/105 - 11/05/106	11/06/106 - 11/06/107	11/07/107 - 11/07/108	11/08/108 - 11/08/109	11/09/109 - 11/09/110	11/10/110 - 11/10/111	11/11/111 - 11/11/112	11/12/112 - 11/12/113	11/13/113 - 11/13/114	11/14/114 - 11/14/115	11/15/115 - 11/15/116	11/16/116 - 11/16/117	11/17/117 - 11/17/118	11/18/118 - 11/18/119	11/19/119 - 11/19/120	11/20/120 - 11/20/121	11/21/121 - 11/21/122	11/22/122 - 11/22/123	11/23/123 - 11/23/124	11/24/124 - 11/24/125	11/25/125 - 11/25/126	11/26/126 - 11/26/127	11/27/127 - 11/27/128	11/28/128 - 11/28/129	11/29/129 - 11/29/130	11/30/130 - 11/30/131	11/31/131 - 11/31/132	11/32/132 - 11/32/133	11/33/133 - 11/33/134	11/34/134 - 11/34/135	11/35/135 - 11/35/136	11/36/136 - 11/36/137	11/37/137 - 11/37/138	11/38/138 - 11/38/139	11/39/139 - 11/39/140	11/40/140 - 11/40/141	11/41/141 - 11/41/142	11/42/142 - 11/42/143	11/43/143 - 11/43/144	11/44/144 - 11/44/145	11/45/145 - 11/45/146	11/46/146 - 11/46/147	11/47/147 - 11/47/148	11/48/148 - 11/48/149	11/49/149 - 11/49/150	11/50/150 - 11/50/151	11/51/151 - 11/51/152	11/52/152 - 11/52/153	11/53/153 - 11/53/154	11/54/154 - 11/54/155	11/55/155 - 11/55/156	11/56/156 - 11/56/157	11/57/157 - 11/57/158	11/58/158 - 11/58/159	11/59/159 - 11/59/160	11/60/160 - 11/60/161	11/61/161 - 11/61/162	11/62/162 - 11/62/163	11/63/163 - 11/63/164	11/64/164 - 11/64/165	11/65/165 - 11/65/166	11/66/166 - 11/66/167	11/67/167 - 11/67/168	11/68/168 - 11/68/169	11/69/169 - 11/69/170	11/70/170 - 11/70/171	11/71/171 - 11/71/172	11/72/172 - 11/72/173	11/73/173 - 11/73/174	11/74/174 - 11/74/175	11/75/175 - 11/75/176	11/76/176 - 11/76/177	11/77/177 - 11/77/178	11/78/178 - 11/78/179	11/79/179 - 11/79/180	11/80/180 - 11/80/181	11/81/181 - 11/81/182	11/82/182 - 11/82/183	11/83/183 - 11/83/184	11/84/184 - 11/84/185	11/85/185 - 11/85/186	11/86/186 - 11/86/187	11/87/187 - 11/87/188	11/88/188 - 11/88/189	11/89/189 - 11/89/190	11/90/190 - 11/90/191	11/91/191 - 11/91/192	11/92/192 - 11/92/193	11/93/193 - 11/93/194	11/94/194 - 11/94/195	11/95/195 - 11/95/196	11/96/196 - 11/96/197	11/97/197 - 11/97/198	11/98/198 - 11/98/199	11/99/199 - 11/99/200	12/00/200 - 12/00/201	12/01/201 - 12/01/202	12/02/202 - 12/02/203	12/03/203 - 12/03/204	12/04/204 - 12/04/205	12/05/205 - 12/05/206	12/06/206 - 12/06/207	12/07/207 - 12/07/208	12/08/208 - 12/08/209	12/09/209 - 12/09/210	12/10/210 - 12/10/211	12/11/211 - 12/11/212	12/12/212 - 12/12/213	12/13/213 - 12/13/214	12/14/214 - 12/14/215	12/15/215 - 12/15/216	12/16/216 - 12/16/217	12/17/217 - 12/17/218	12/18/218 - 12/18/219	12/19/219 - 12/19/220	12/20/220 - 12/20/221	12/21/221 - 12/21/222	12/22/222 - 12/22/223	12/23/223 - 12/23/224	12/24/224 - 12/24/225	12/25/225 - 12/25/226	12/26/226 - 12/26/227	12/27/227 - 12/27/228	12/28/228 - 12/28/229	12/29/229 - 12/29/230	12/30/230 - 12/30/231	12/31/231 - 12/31/232	12/32/232 - 12/32/233	12/33/233 - 12/33/234	12/34/234 - 12/34/235	12/35/235 - 12/35/236	12/36/236 - 12/36/237	12/37/237 - 12/37/238	12/38/238 - 12/38/239	12/39/239 - 12/39/240	12/40/240 - 12/40/241	12/41/241 - 12/41/242	12/42/242 - 12/42/243	12/43/243 - 12/43/244	12/44/244 - 12/44/245	12/45/245 - 12/45/246	12/46/246 - 12/46/247	12/47/247 - 12/47/248	12/48/248 - 12/48/249	12/49/249 - 12/49/250	12/50/250 - 12/50/251	12/51/251 - 12/51/252	12/52/252 - 12/52/253	12/53/253 - 12/53/254	12/54/254 - 12/54/255	12/55/255 - 12/55/256	12/56/256 - 12/56/257	12/57/257 - 12/57/258	12/58/258 - 12/58/259	12/59/259 - 12/59/260	12/60/260 - 12/60/261	12/61/261 - 12/61/262	12/62/262 - 12/62/263	12/63/263 - 12/63/264	12/64/264 - 12/64/265	12/65/265 - 12/65/266	12/66/266 - 12/66/267	12/67/267 - 12/67/268	12/68/268 - 12/68/269	12/69/269 - 12/69/270	12/70/270 - 12/70/271	12/71/271 - 12/71/272	12/72/272 - 12/72/273	12/73/273 - 12/73/274	12/74/274 - 12/74/275	12/75/275 - 12/75/276	12/76/276 - 12/76/277	12/77/277 - 12/77/278	12/78/278 - 12/78/279	12/79/279 - 12/79/280	12/80/280 - 12/80/281	12/81/281 - 12/81/282	12/82/282 - 12/82/283	12/83/283 - 12/83/284	12/84/284 - 12/84/285	12/85/285 - 12/85/286	12/86/286 - 12/86/287	12/87/287 - 12/87/288	12/88/288 - 12/88/289	12/89/289 - 12/89/290	12/90/290 - 12/90/291	12/91/291 - 12/91/292	12/92/292 - 12/92/293	12/93/293 - 12/93/294	12/94/294 - 12/94/295	12/95/295 - 12/95/296	12/96/296 - 12/96/297	12/97/297 - 12/97/298	12/98/298 - 12/98/299	12/99/299 - 12/99/300	13/00/300 - 13/00/301	13/01/301 - 13/01/302	13/02/302 - 13/02/303	13/03/303 - 13/03/304	13/04/304 - 13/04/305	13/05/305 - 13/05/306	13/06/306 - 13/06/307	13/07/307 - 13/07/308	13/08/308 - 13/08/309	13/09/309 - 13/09/310	13/10/310 - 13/10/311	13/11/311 - 13/11/312	13/12/312 - 13/12/313	13/13/313 - 13/13/314	13/14/314 - 13/14/315	13/15/315 - 13/15/316	13/16/316 - 13/16/317	13/17/317 - 13/17/318	13/18/318 - 13/18/319	13/19/319 - 13/19/320	13/20/320 - 13/20/321	13/21/321 - 13/21/322	13/22/322 - 13/22/323	13/23/323 - 13/23/324	13/24/324 - 13/24/325	13/25/325 - 13/25/326	13/26/326 - 13/26/327	13/27/327 - 13/27/328	13/28/328 - 13/28/329	13/29/329 - 13/29/330	13/30/330 - 13/30/331	13/31/331 - 13/31/332	13/32/332 - 13/32/333	13/33/333 - 13/33/334	13/34/334 - 13/34/335	13/35/335 - 13/35/336	13/36/336 - 13/36/337	13/37/337 - 13/37/338	13/38/338 - 13/38/339	13/39/339 - 13/39/340	13/40/340 - 13/40/341	13/41/341 - 13/41/342	13/42/342 - 13/42/343	13/43/343 - 13/43/344	13/44/344 - 13/44/345	13/45/345 - 13/45/346	13/46/346 - 13/46/347	13/47/347 - 13/47/348	13/48/348 - 13/48/349	13/49/349 - 13/49/350	13/50/350 - 13/50/351	13/51/351 - 13/51/352	13/52/352 - 13/52/353	13/53/353 - 13/53/354	13/54/354 - 13/54/355	13/55/355 - 13/55/356	13/56/356 - 13/56/357	13/57/357 - 13/57/358	13/58/358 - 13/58/359	13/59/359 - 13/59/360	13/60/360 - 13/60/361	13/61/361 - 13/61/362	13/62/362 - 13/62/363	13/63/363 - 13/63/364	13/64/364 - 13/64/365	13/65/365 - 13/65/366	13/66/366 - 13/66/367	13/67/367 - 13/67/368	13/68/368 - 13/68/369	13/69/369 - 13/69/370	13/70/370 - 13/70/371	13/71/371 - 13/71/372	13/72/372 - 13/72/373	13/73/373 - 13/73/374	13/74/374 - 13/74/375	13/75/375 - 13/75/376	13/76/376 - 13/76/377	13/77/377 - 13/77/378	13/78/378 - 13/78/379	13/79/379 - 13/79/380	13/80/380 - 13/80/381	13/81/381 - 13/81/382	13/82/382 - 13/82/383	13/83/383 - 13/83/384	13/84/384 - 13/84/385	13/85/385 - 13/85/386	13/86/386 - 13/86/387	13/87/387 - 13/87/388	13/88/388 - 13/88/389	13/89/389 - 13/89/390	13/90/390 - 13/90/391	13/91/391 - 13/91/392	13/92/392 - 13/92/393	13/93/393 - 13/93/394	13/94/394 - 13/94/395	13/95/395 - 13/95/396	13/96/396 - 13/96/397	13/97/397 - 13/97/398	13/98/398 - 13/98/399	13/99/399 - 13/99/400	14/00/400 - 14/00/401	14/01/401 - 14/01/402	14/02/402 - 14/02/403	14/03/403 - 14/03/404	14/04/404 - 14/04/405	14/05/405 - 14/05/406	14/06/406 - 14/06/407	14/07/407 - 14/07/408	14/08/408 - 14/08/409	14/09/409 - 14/09/410	14/10/410 - 14/10/411	14/11/411 - 14/11/412	14/12/412 - 14/12/413	14/13/413 - 14/13/414	14/14/414 - 14/14/415	14/15/415 - 14/15/416	14/16/416 - 14/16/417	14/17/417 - 14/17/418	14/18/418 - 14/18/419	14/19/419 - 14/19/420	14/20/420 - 14/20/421	14/21/421 - 14/21/422	14/22/422 - 14/22/423	14/23/423 - 14/23/424	14/24/424 - 14/24/425	14/25/425 - 14/25/426	14/26/426 - 14/26/427	14/27/427 - 14/27/428	14/28/428 - 14/28/429	14/29/429 - 14/29/430	14/30/430 - 14/30/431	14/31/431 - 14/31/432	14/32/432 - 14/32/433	14/33/433 - 14/33/434	14/34/434 - 14/34/435	14/35/435 - 14/35/436	14/36/436 - 14/36/437	14/37/437 - 14/37/438	14/38/438 - 14/38/439	14/39/439 - 14/39/440	14/40/440 - 14/40/441	14/41/441 - 14/41/442	14/42/442 - 14/42/443	14/43/443 - 14/43/444	14/44/444 - 14/44/445	14/45/445 - 14/45/446	14/46/446 - 14/46/447	14/47/447 - 14/47/448	14/48/448 - 14/48/449	14/49/449 - 14/49/450	14/50/450 - 14/50/451	14/51/451 - 14/51/452	14/52/452 - 14/52/453	14/53/453 - 14/53/454	14/54/454 - 14/54/455	14/55/455 - 14/55/456	14/56/456 - 14/56/457	14/57/457 - 14/57/458	14/58/458 - 14/58/459	14/59/459 - 14/59/460	14/60/460 - 14/60/461	14/61/461 - 14/61/462	14/62/462 - 14/62/463	14/63/463 - 14/63/464	14/64/464 - 14/64/465	14/65/465 - 14/65/466	14/66/466 - 14/66/467	14/67/467 - 14/67/468	14/68/468 - 14/68/469	14/69/469 - 14/69/470	14/70/470 - 14/70/471	14/71/471 - 14/71/472	14/72/472 - 14/72/473	14/73/473 - 14/73/474	14/74/474 - 14/74/475	14/75/475 - 14/75/476	14/76/476 - 14/76/477	14/77/477 - 14/77/478	14/78/478 - 14/78/479	14/79/479 - 14/79/480	14/80/480 - 14/80/481	14/81/481 - 14/81/482	14/82/482 - 14/82/483	14/83/483 - 14/83/484	14/84/484 - 14/84/485	14/85/485 - 14/85/486	14/86/486 - 14/86/487	14/87/487 - 14/87/488	14/88/488 - 14/88/489	14/89/489 - 14/89/490	14/90/490 - 14/90/491	14/91/491 - 14/91/492	14/92/492 - 14/92/493	14/93/493 - 14/93/494	14/94/494 - 14/94/495	14/95/495 - 14/95/496	14/96/496 - 14/96/497	14/97/497 - 14/97/498	14/98/498 - 14/98/499	14/99/499 - 14/99/500	15/00/500 - 15/00/501	15/01/501 - 15/01/502	15/02/502 - 15/02/503	15/03/503 - 15/03/504	15/04/504 - 15/04/505	15/05/505 - 15/05/506	15/06/506 - 15/06/507	15/07/507 - 15/07/508	15/08/508 - 15/08/509	15/09/509 - 15/09/510	15/10/510 - 15/10/511	15/11/511 - 15/11/512	15/12/
------	---------------------	---------------------	---------------------	---------------------	---------------------	---------------------	---------------------	---------------------	---------------------	---------------------	---------------------	---------------------	---------------------	---------------------	---------------------	---------------------	---------------------	---------------------	---------------------	---------------------	---------------------	---------------------	---------------------	---------------------	---------------------	---------------------	---------------------	---------------------	---------------------	---------------------	---------------------	---------------------	---------------------	---------------------	---------------------	---------------------	---------------------	---------------------	---------------------	---------------------	---------------------	---------------------	---------------------	---------------------	---------------------	---------------------	---------------------	---------------------	---------------------	---------------------	---------------------	---------------------	---------------------	---------------------	---------------------	---------------------	---------------------	---------------------	---------------------	---------------------	---------------------	---------------------	---------------------	---------------------	---------------------	---------------------	---------------------	---------------------	---------------------	---------------------	---------------------	---------------------	---------------------	---------------------	---------------------	---------------------	---------------------	---------------------	---------------------	---------------------	---------------------	---------------------	----------------------	-----------------------	-----------------------	-----------------------	-----------------------	-----------------------	-----------------------	-----------------------	-----------------------	-----------------------	-----------------------	-----------------------	-----------------------	-----------------------	-----------------------	-----------------------	-----------------------	-----------------------	-----------------------	-----------------------	-----------------------	-----------------------	-----------------------	-----------------------	-----------------------	-----------------------	-----------------------	-----------------------	-----------------------	-----------------------	-----------------------	-----------------------	-----------------------	-----------------------	-----------------------	-----------------------	-----------------------	-----------------------	-----------------------	-----------------------	-----------------------	-----------------------	-----------------------	-----------------------	-----------------------	-----------------------	-----------------------	-----------------------	-----------------------	-----------------------	-----------------------	-----------------------	-----------------------	-----------------------	-----------------------	-----------------------	-----------------------	-----------------------	-----------------------	-----------------------	-----------------------	-----------------------	-----------------------	-----------------------	-----------------------	-----------------------	-----------------------	-----------------------	-----------------------	-----------------------	-----------------------	-----------------------	-----------------------	-----------------------	-----------------------	-----------------------	-----------------------	-----------------------	-----------------------	-----------------------	-----------------------	-----------------------	-----------------------	-----------------------	-----------------------	-----------------------	-----------------------	-----------------------	-----------------------	-----------------------	-----------------------	-----------------------	-----------------------	-----------------------	-----------------------	-----------------------	-----------------------	-----------------------	-----------------------	-----------------------	-----------------------	-----------------------	-----------------------	-----------------------	-----------------------	-----------------------	-----------------------	-----------------------	-----------------------	-----------------------	-----------------------	-----------------------	-----------------------	-----------------------	-----------------------	-----------------------	-----------------------	-----------------------	-----------------------	-----------------------	-----------------------	-----------------------	-----------------------	-----------------------	-----------------------	-----------------------	-----------------------	-----------------------	-----------------------	-----------------------	-----------------------	-----------------------	-----------------------	-----------------------	-----------------------	-----------------------	-----------------------	-----------------------	-----------------------	-----------------------	-----------------------	-----------------------	-----------------------	-----------------------	-----------------------	-----------------------	-----------------------	-----------------------	-----------------------	-----------------------	-----------------------	-----------------------	-----------------------	-----------------------	-----------------------	-----------------------	-----------------------	-----------------------	-----------------------	-----------------------	-----------------------	-----------------------	-----------------------	-----------------------	-----------------------	-----------------------	-----------------------	-----------------------	-----------------------	-----------------------	-----------------------	-----------------------	-----------------------	-----------------------	-----------------------	-----------------------	-----------------------	-----------------------	-----------------------	-----------------------	-----------------------	-----------------------	-----------------------	-----------------------	-----------------------	-----------------------	-----------------------	-----------------------	-----------------------	-----------------------	-----------------------	-----------------------	-----------------------	-----------------------	-----------------------	-----------------------	-----------------------	-----------------------	-----------------------	-----------------------	-----------------------	-----------------------	-----------------------	-----------------------	-----------------------	-----------------------	-----------------------	-----------------------	-----------------------	-----------------------	-----------------------	-----------------------	-----------------------	-----------------------	-----------------------	-----------------------	-----------------------	-----------------------	-----------------------	-----------------------	-----------------------	-----------------------	-----------------------	-----------------------	-----------------------	-----------------------	-----------------------	-----------------------	-----------------------	-----------------------	-----------------------	-----------------------	-----------------------	-----------------------	-----------------------	-----------------------	-----------------------	-----------------------	-----------------------	-----------------------	-----------------------	-----------------------	-----------------------	-----------------------	-----------------------	-----------------------	-----------------------	-----------------------	-----------------------	-----------------------	-----------------------	-----------------------	-----------------------	-----------------------	-----------------------	-----------------------	-----------------------	-----------------------	-----------------------	-----------------------	-----------------------	-----------------------	-----------------------	-----------------------	-----------------------	-----------------------	-----------------------	-----------------------	-----------------------	-----------------------	-----------------------	-----------------------	-----------------------	-----------------------	-----------------------	-----------------------	-----------------------	-----------------------	-----------------------	-----------------------	-----------------------	-----------------------	-----------------------	-----------------------	-----------------------	-----------------------	-----------------------	-----------------------	-----------------------	-----------------------	-----------------------	-----------------------	-----------------------	-----------------------	-----------------------	-----------------------	-----------------------	-----------------------	-----------------------	-----------------------	-----------------------	-----------------------	-----------------------	-----------------------	-----------------------	-----------------------	-----------------------	-----------------------	-----------------------	-----------------------	-----------------------	-----------------------	-----------------------	-----------------------	-----------------------	-----------------------	-----------------------	-----------------------	-----------------------	-----------------------	-----------------------	-----------------------	-----------------------	-----------------------	-----------------------	-----------------------	-----------------------	-----------------------	-----------------------	-----------------------	-----------------------	-----------------------	-----------------------	-----------------------	-----------------------	-----------------------	-----------------------	-----------------------	-----------------------	-----------------------	-----------------------	-----------------------	-----------------------	-----------------------	-----------------------	-----------------------	-----------------------	-----------------------	-----------------------	-----------------------	-----------------------	-----------------------	-----------------------	-----------------------	-----------------------	-----------------------	-----------------------	-----------------------	-----------------------	-----------------------	-----------------------	-----------------------	-----------------------	-----------------------	-----------------------	-----------------------	-----------------------	-----------------------	-----------------------	-----------------------	-----------------------	-----------------------	-----------------------	-----------------------	-----------------------	-----------------------	-----------------------	-----------------------	-----------------------	-----------------------	-----------------------	-----------------------	-----------------------	-----------------------	-----------------------	-----------------------	-----------------------	-----------------------	-----------------------	-----------------------	-----------------------	-----------------------	-----------------------	-----------------------	-----------------------	-----------------------	-----------------------	-----------------------	-----------------------	-----------------------	-----------------------	-----------------------	-----------------------	-----------------------	-----------------------	-----------------------	-----------------------	-----------------------	-----------------------	-----------------------	-----------------------	-----------------------	-----------------------	--------

Mobility Factors

Mobility Factors (Fall 2014-2017) - 3 Year Averages
(Broken Down by Elementary School Attendance Area)

Elementary School	K to 1	1 to 2	2 to 3	3 to 4	4 to 5	5 to 6	6 to 7	7 to 8	8 to 9	9 to 10	10 to 11	11 to 12
Bernie ES	1.000	0.990	1.040	1.020	1.010	1.000	1.030	0.980	1.010	0.940	0.940	0.980
Boyd ES	1.000	0.990	1.010	1.070	1.030	0.990	1.070	1.030	1.070	0.990	0.990	0.990
Casey ES	0.970	1.010	0.960	0.960	0.970	0.960	1.010	0.960	0.940	1.010	0.940	0.980
Curtis ES	1.020	0.980	0.970	0.990	0.990	0.990	1.020	0.980	1.010	0.950	1.010	0.900
Dolan ES	1.000	1.020	1.040	0.990	0.980	0.980	1.010	1.050	1.020	0.960	0.970	1.010
Dunn ES	1.030	1.020	0.980	1.010	0.980	0.940	1.010	0.980	0.990	1.000	0.930	0.940
Fitzgerald ES	1.050	1.000	0.940	0.980	1.010	0.970	0.940	0.980	0.990	0.940	0.980	0.980
Gard ES	1.070	1.020	1.000	0.950	1.020	0.950	1.030	1.010	1.000	1.000	0.930	0.990

GREEN = net increase from one grade to another
RED = net decrease from one grade to another
BLUE = no change / straight pass through

3 Years of Change

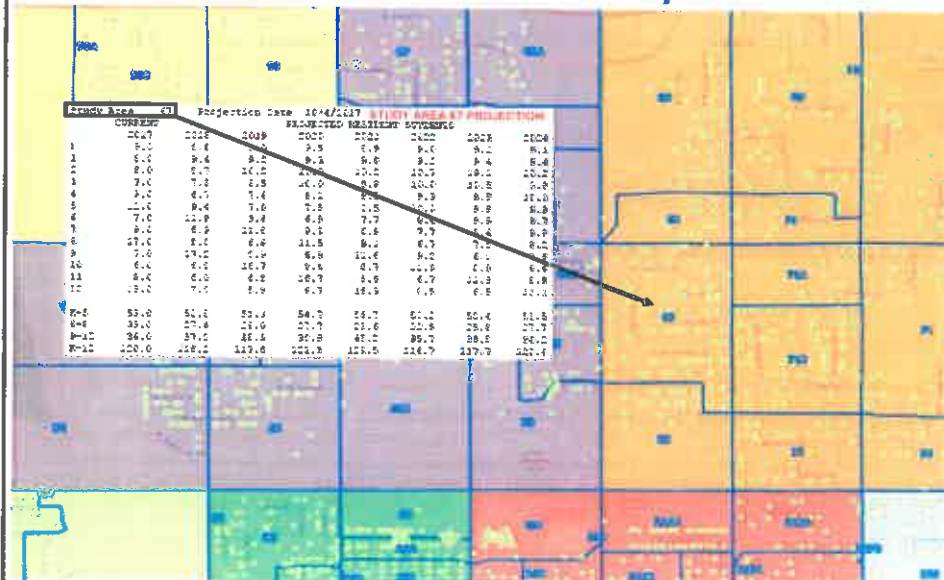
Page 12 of the Report

- DDP conducts historical student data comparisons for Study Areas where there are no new residential development over the past five years
- DDP used 4 years of mapped student data (Fall 2014-17) and conducts annual grade transition analysis using an average – (3 years of change).
- This factor helps to account for housing resales, foreclosures, apartment migration and HS dropouts.



10

Projections for Each Study Area

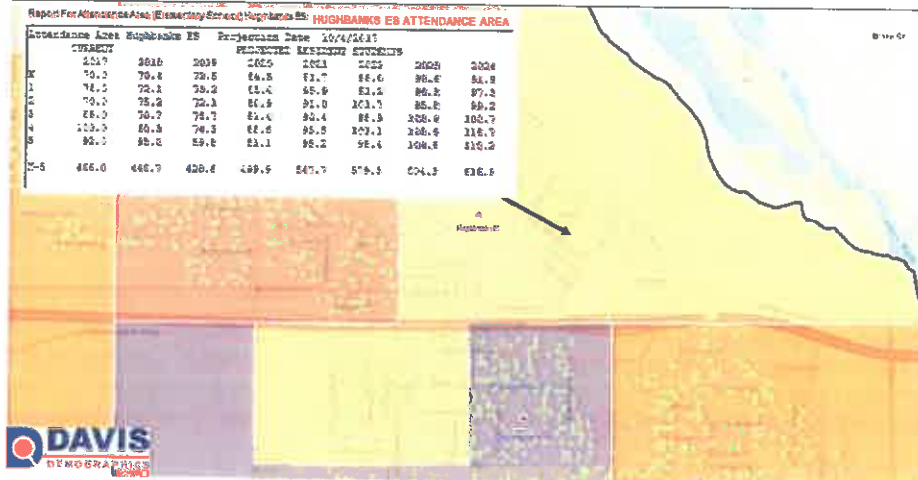


Individual projections were generated for each of the District's 327 Study Areas

11

(Ref. E 1.17)

Projections for Each Attendance Area



Individual projections were generated for each of the District's 19 elementary school attendance areas, as well as its 5 middle school attendance areas and 3 high school attendance area.

These are simply the addition of the individual Study Area projections that make up each attendance area.

12

District-wide 7-Year Projections

[illegible]

Larger class size bubble within the higher elementary grades and middle school grades

Page 22 of the report

Impact from Mobility and Development

District-wide 7-Year Projections

Projection Date 10/14/2017

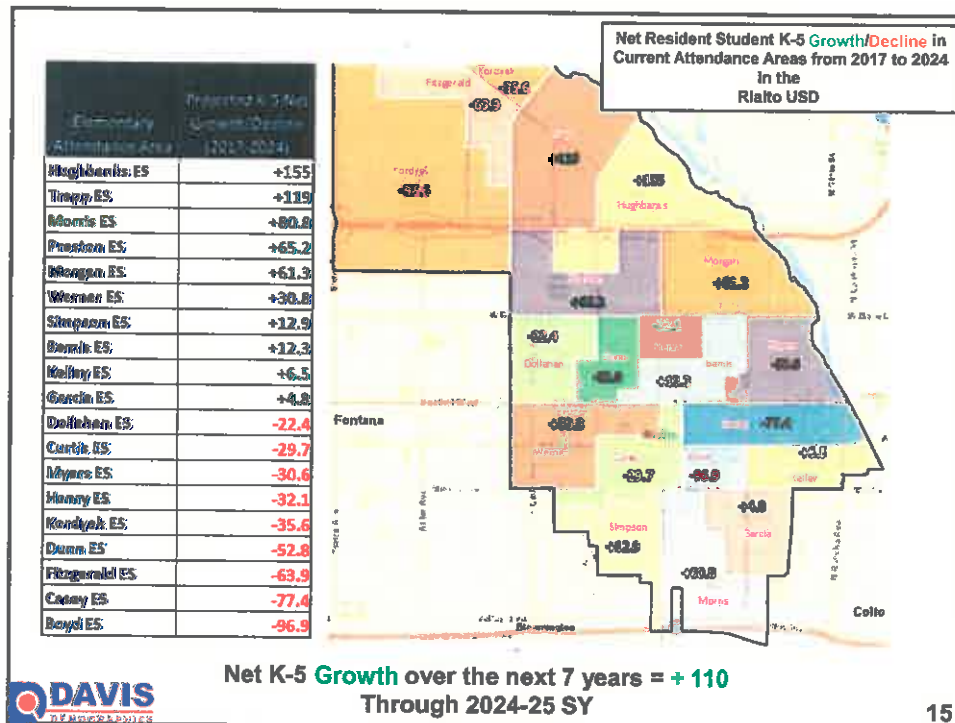
	Historic			Current	Projected Resident Student Counts						
	Fall 2014	Fall 2015	Fall 2016		Fall 2018	Fall 2019	Fall 2020	Fall 2021	Fall 2022	Fall 2023	Fall 2024
Resident TK-5	11,424	11,443	11,171	10,970.8	10,776.8	10,783.1	10,912.2	10,899.9	10,878.4	10,961.8	11,075.4
Resident 6-8	5,774	5,688	5,362	5,252.3	5,166.3	5,166.3	5,166.3	5,166.3	5,166.3	5,166.3	5,166.3
Resident 9-12	7,582	7,426	7,447	7,427.6	7,332.8	7,549.5	7,629.9	7,787.6	7,809.5	7,542.1	7,485.8
Out of District TK-12	1,229	1,211	1,112	1,112.0	1,112.0	1,112.0	1,112.0	1,112.0	1,112.0	1,112.0	1,112.0
Unmatched Students	3	3	3	2.0	2.0	2.0	2.0	2.0	2.0	2.0	2.0
Totals TK-12	26,012	25,781	25,495	25,316	25,085.4	25,162.8	25,242.3	25,160.4	25,224.9	25,188.1	25,650.9

Net Growth/Decline

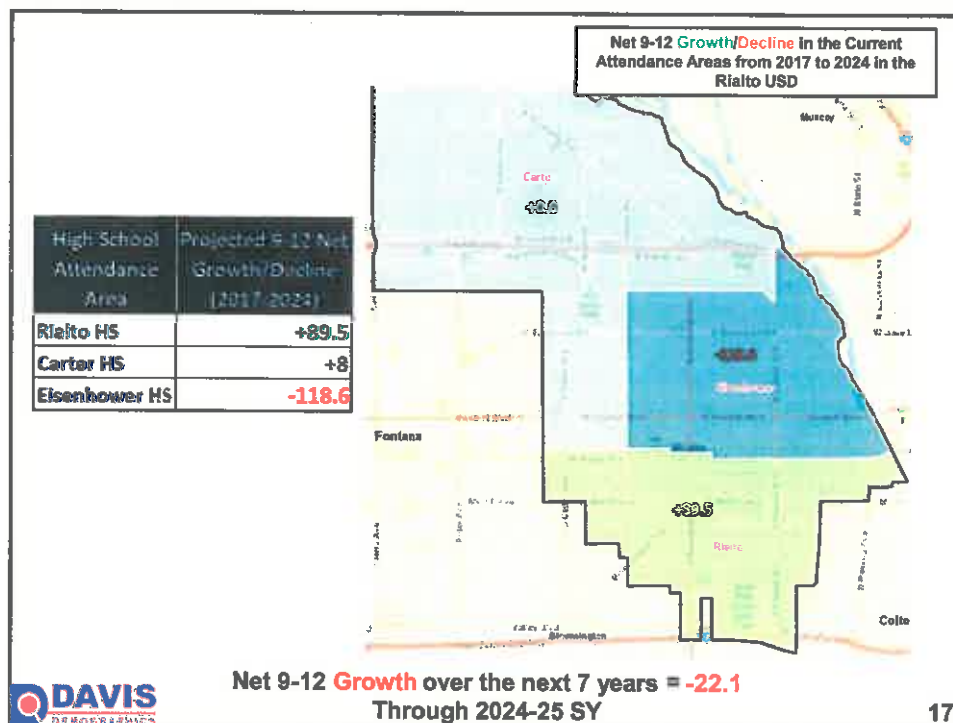
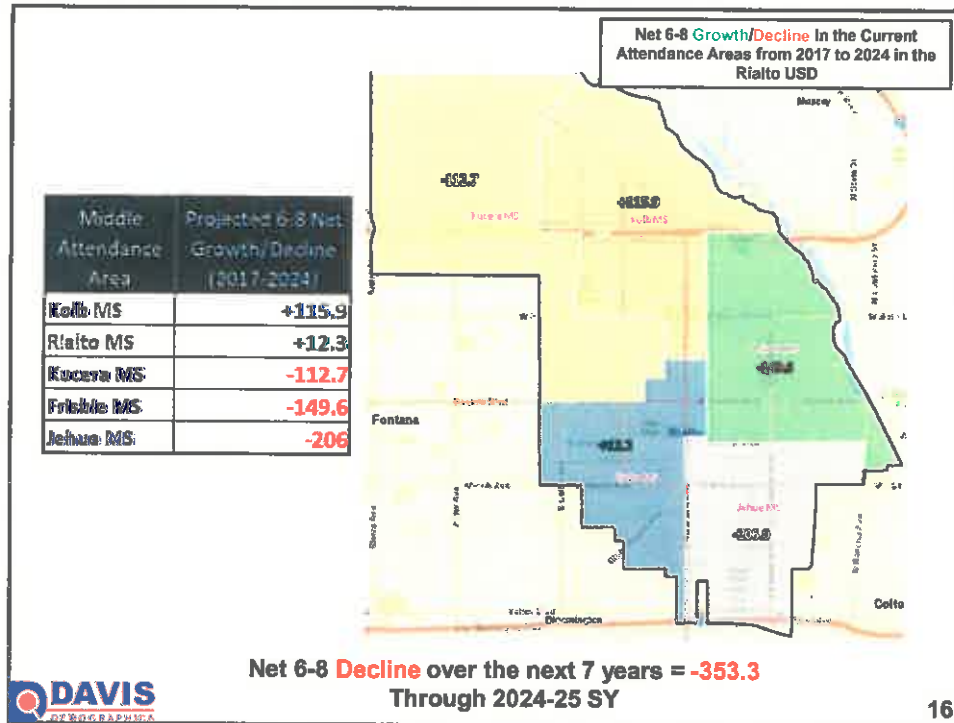
Net TK-5	110.3	1.0%
Net 6-8	-353.3	-5.8%
Net 9-12	-22.1	-0.3%
Net TK-12	-265.1	-1.0%

Net Growth/Decline over the next 7 years
Through 2024-25 SY

Page 25 of the report



(Ref. E 1.19)



Summary

- There may be as many as 1,646 mixed units built over the next seven years
- District will be able to absorb growth from areas such as Trapp and Hughbanks but boundary re-alignments are recommended
- District will be able to absorb growth with Kolb MS and Rialto HS which have largest projected growth at middle and high school level.
- Positive in-migration amongst elementary grades. Negative out-migration pattern occurring when students transition from elementary school to junior high
- Negative out migration pattern occurring within the high school grades.
- Projected Growth/Declines in different areas calls for better balance in enrollment amongst the attendance areas especially for elementary areas.

Q&A

Career Technical Education (CTE)



October 24, 2018

Presented by

World Class Opportunity
CTE & Rialto College & Career Pathways

and
EAD School P.O. and District Office
Rialto College and Career



Bridging
Futures
through
Innovation

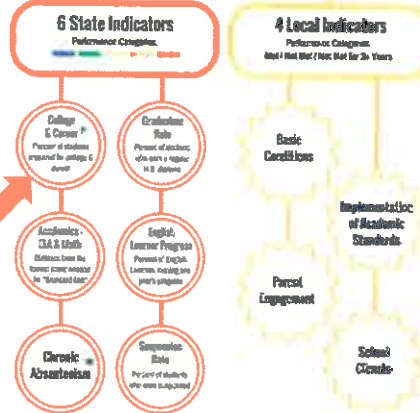
In **ESSA**, should our district language
shift **from A-G to College and Career
Readiness** Indicator?



How does the
California
Department of
Education,
 determine
 “**College and**
Career
Readiness” ?

CALIFORNIA SCHOOL DASHBOARD

10 Indicators to Measure Performance



**High
 School
 Diploma**

**Completion
 of CTE
 Pathway**



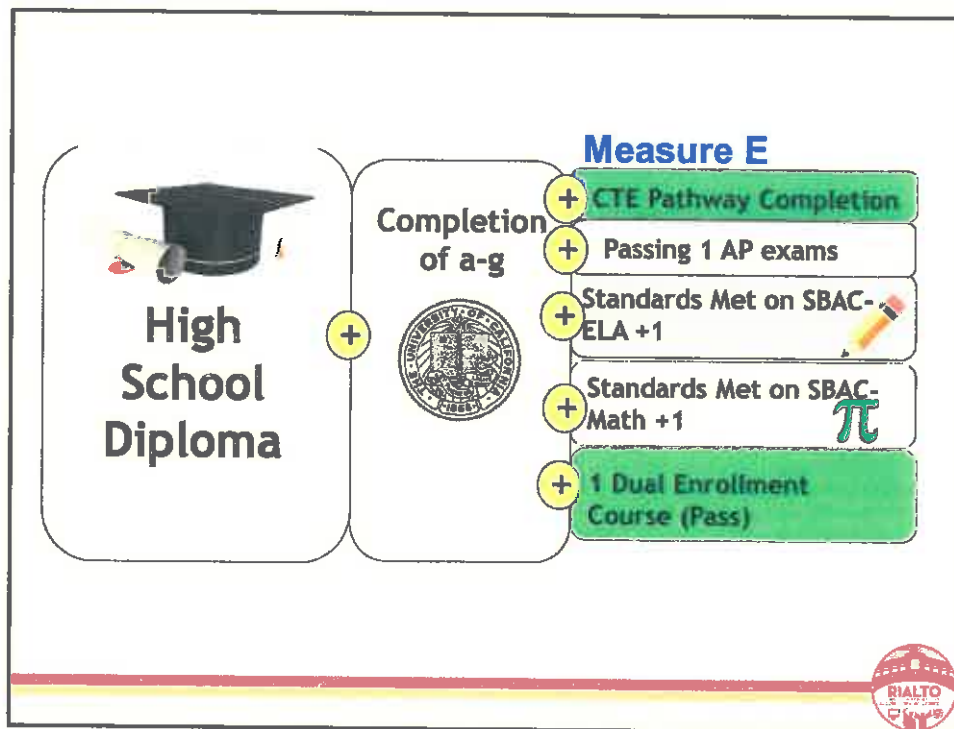
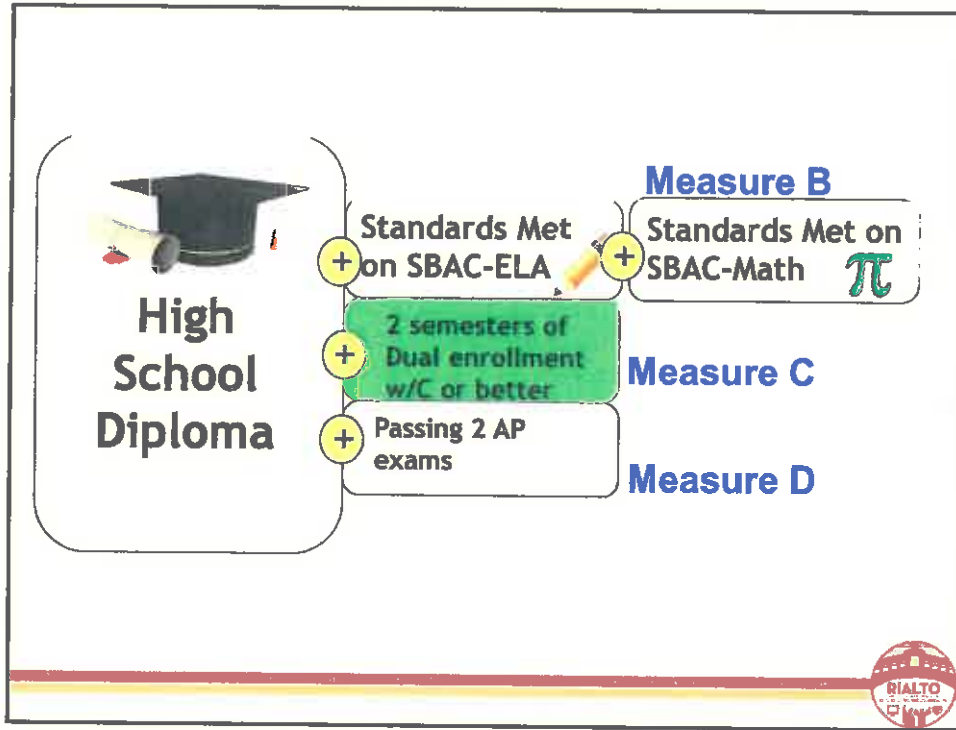
Measure A

**Standards Met on SBAC-
 ELA +1**

**Standards Met on SBAC-
 Math +1**

**1 Dual Enrollment
 Course (Pass)**





What is the benefit for promoting CTE?

- Developing Leadership at all Levels
- Authentic Learning and Instruction
- Career Exploration and Guidance
- Student Support
- Industry Partnership
- Coherence

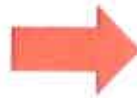


CTE Completers

A CTE completer is a student who has **met** the requirements for **a CTE concentration sequence**, as identified in the course listings within the Administrative Planning Guide (APG), and all requirements for high school graduation.



Where have we been?



In general, **ROP** was replaced with **Career Technical Education (CTE)**. The main **difference** between ROP and CTE, is that CTE funding requires each class be part of a pathway and lead somewhere, either industry certification, college or directly into a high wage, high demand career.



Where are we?



What are our A-G aligned CTE Pathways?

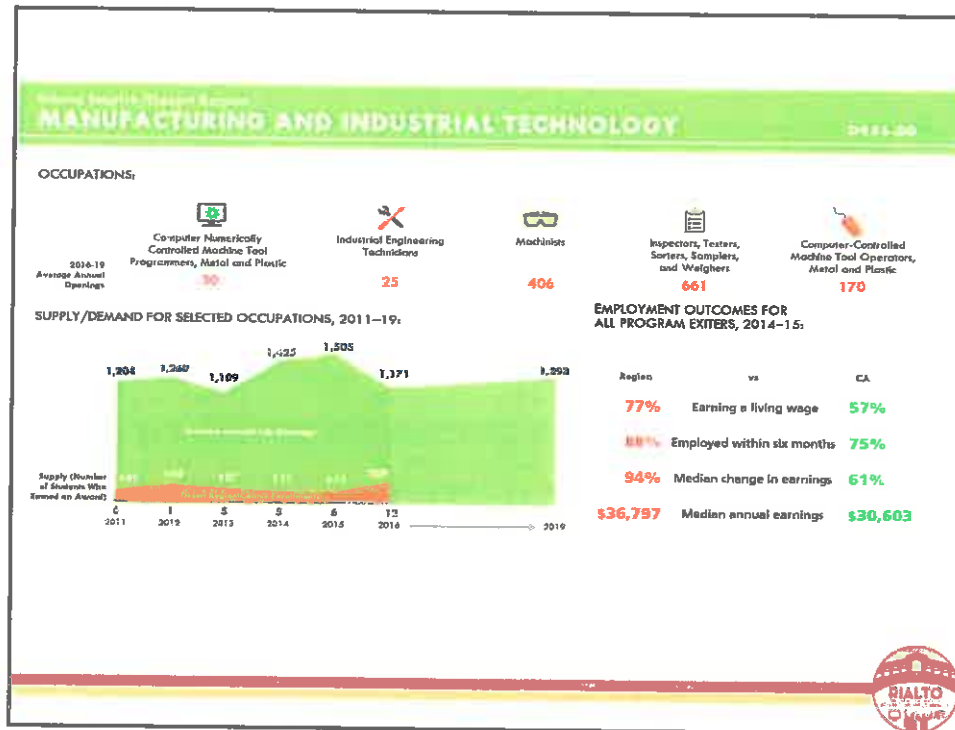


Total Pathways = 15



Why do we
care about
CALPADS?





Using Data to Shift
FROM
College and College
Mindset
TO
College and Career
Mindset

<http://www.desertcolleges.org/docs/coe/sector-profile-reports-v5.pdf>

RIALTO COLLEGE

What about Staffing?

1- 3 Year Goals

Current Reality

- 23** Highly qualified full time CTE teachers
- 4+** teachers pursuing CTE credentials

Recruit Additional:

- 2-3** Advanced Manufacturing
- 1-2** Advanced Logistics & Business

Develop Capacity:

- 1-2** Energy, Construction and Utilities
- 1-2** Health
- 2-3** Information Communication Technology/ Digital Media



CALIFORNIA COMMUNITY COLLEGES

Doing What MATTERS™

FOR JOBS AND THE ECONOMY

What are the Industry needs for the Inland Empire?

- **Advanced Manufacturing**
- **Advanced Transportation and Logistics**
- **Business and Entrepreneurship**
- **Energy, Construction and Utilities**
- **Health**
- **Information and Communication Technology (ICT)/ Digital Media**



Focus Areas



Career Exploration and Guidance

Increase COMPLETERS by  *Increasing awareness*
Creating 4-year plans with CTE in mind



5th Grade RISE Youth Experience

January 22-25, 2019



8th Grade Career Cruisin'

December 10-14, 2018



Student Leadership Development and Support

Career Technical Student Organizations (CTSOs)



STEM, College and Career Center



**Transforming the Engineering Building into A STEM Center
for Teacher Learning and Student Exploration**



CTE Promotion, Outreach, and Communication

Informational Pamphlets



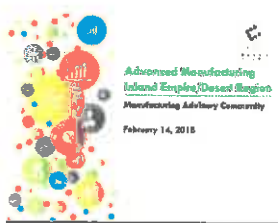
Branding & School Banners

Posters



Respond to Changing Economic Demands

Professional Participation In Regional Collaboratives



Continue Moving Forward with Innovative New Courses:

1. LEADIIR SSP: Business in the 21st Century, Maximizing Business Profits
2. Cybersecurity
3. Green Residential and Commercial Construction



Rialto Educators ARISE Program



Over 60 percent of teachers teach within 20 miles of where they went to high school. Right now — today — in every community, the next generation of educators is sitting on the student side of the desks. We're all counting on homegrown teachers to be highly skilled, well-prepared professionals and our existing pipeline isn't doing the job well enough.

The Need Is Staggering

America needs to hire
300,000
NEW TEACHERS
every year,

BUT

INTEREST

IN TEACHING IS AT AN

ALL-TIME
LOW.

ONLY **5%**
of ACT-takers
INDICATE THEY
want
TEACH.

Enrollment in teacher preparation programs
DROPPED by **35 percent**
between 2009 and 2014 and **CONTINUES**
TO FALL.



Why start recruitment in High School?

Carter High School:

Child Development
(Focus: Pre-K to Gr.2)

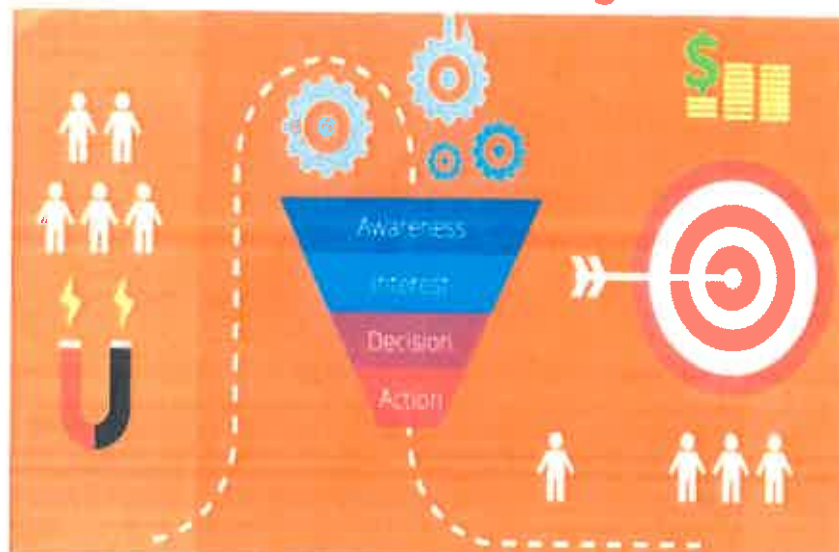
Eisenhower High School

Intermediate Education
(Focus: Gr. 3-12 + STEM)

- ❖ **Broaden the tent** for bright, creative young people to experience the high-impact empowerment teaching can offer.
- ❖ Offer students opportunities to develop **transferrable skills** through leadership development and student teaching experiences that also advance local **career readiness** agendas.
- ❖ **Increase diversity** in their local teacher workforce and steer rising educators toward exploring **high-needs subject areas**.
- ❖ Create **career ladders** for local teachers and give them opportunities to **lead without leaving** the classroom as they pay forward their talent and expertise by recruiting and mentoring the next generation.



Supports, Commitments & Agreements



Cyber Rialto



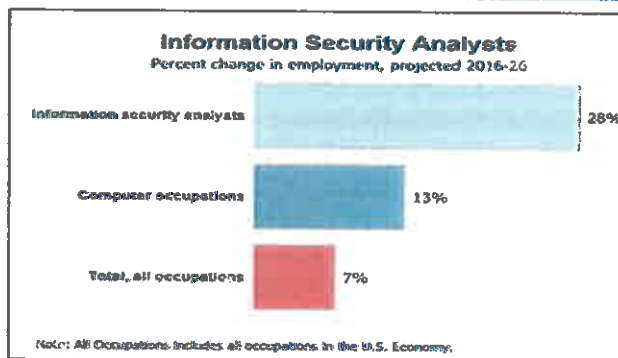
Why Cybersecurity?

OCCUPATIONAL OUTLOOK HANDBOOK

Occupational Outlook Handbook - Computer and Information Technology

Information Security Analysts

Summary What They Do Work Environment How to Become One Pay Data Outlook State & Area Data Similar Occupations More Info



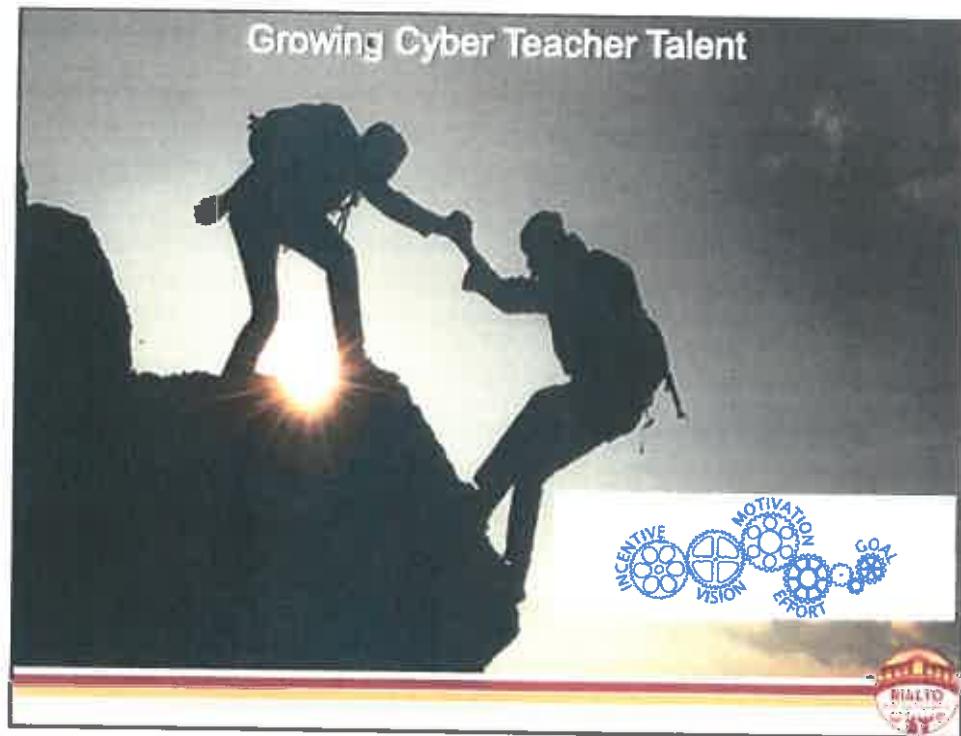
Information Security Analysts

Employment projections data for information security analysts, 2016-26

Occupational Title	SOC Code	Employment, 2016	Projected Employment, 2026	Percent Change, 2016-26	Numeric	Employment by Industry
Information security analysts	15-1122	100,000	128,500	28	28,500	

SOURCE: U.S. Bureau of Labor Statistics, Employment Projections program





(Ref. E 1.36)